

Vertebral Column, Sternum, Ribs

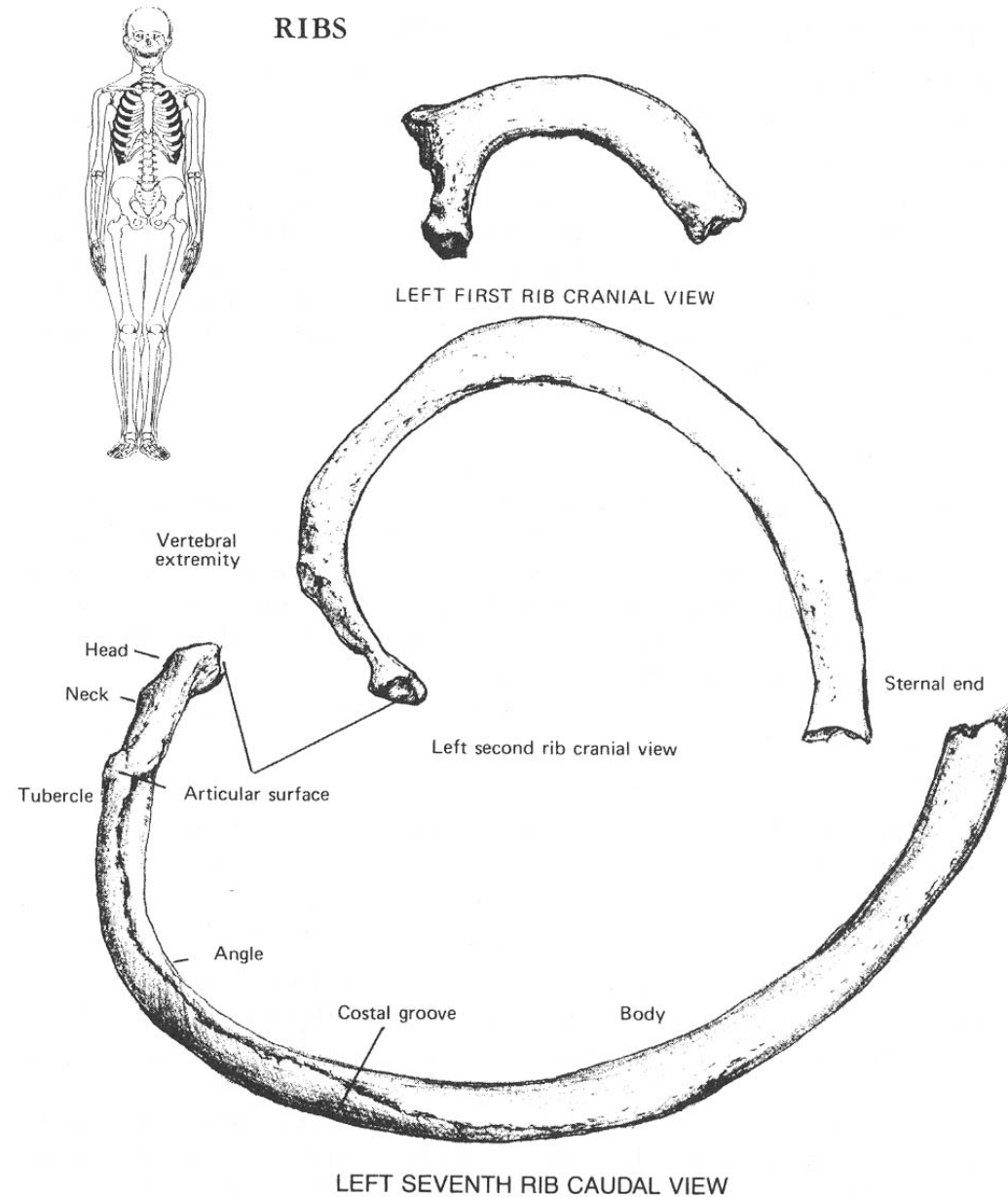


Bones of the Thorax

- Ribs (12 pairs)
 - True Ribs: Ribs 1 – 7
 - False Ribs: Ribs 8 – 10
 - Floating Ribs: Ribs 11 and 12
- Sternum (1)
 - Manubrium
 - Body (=Corpus, Sternum)
 - Xiphoid

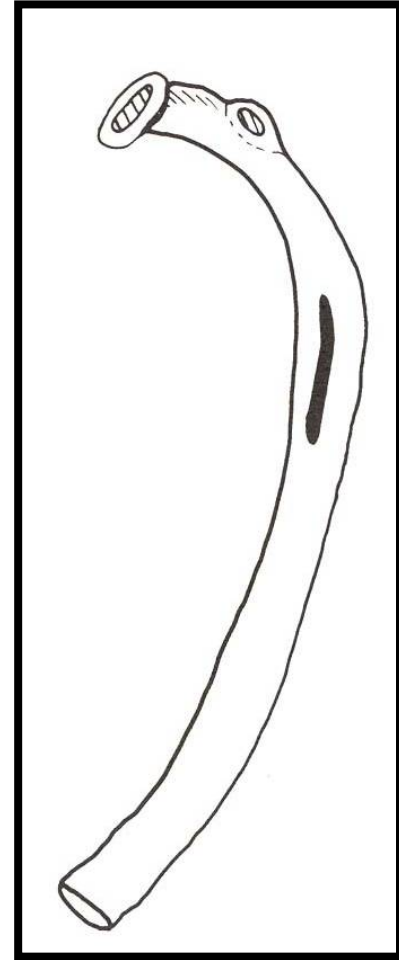
Ribs (Costae)

- Head (capitulum)
- Neck
- Sternal End
- Tubercle
- Shaft
- Costal Groove



Rib Growth

- One primary center of ossification in the shaft
- Two secondary centers of ossification
 - Head
 - Tubercle



Identification of Ribs

- Ribs are easy to distinguish from other bones of the body even when fragmentary
- Identification of specific rib number not required
 - Approach by seriation
 - Ellipse increases to rib 9

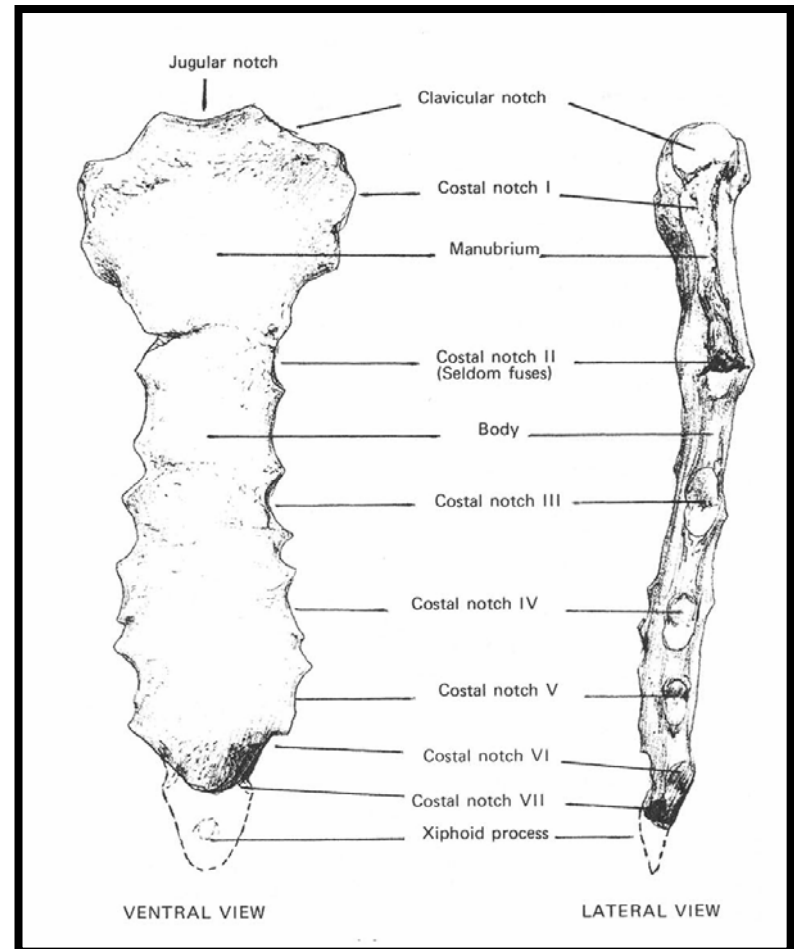
Siding of Ribs

- Superior edge is blunt, inferior edge is sharp due to costal groove
- Convex side is lateral
- Orient the rib as it would appear in your body

Sternum

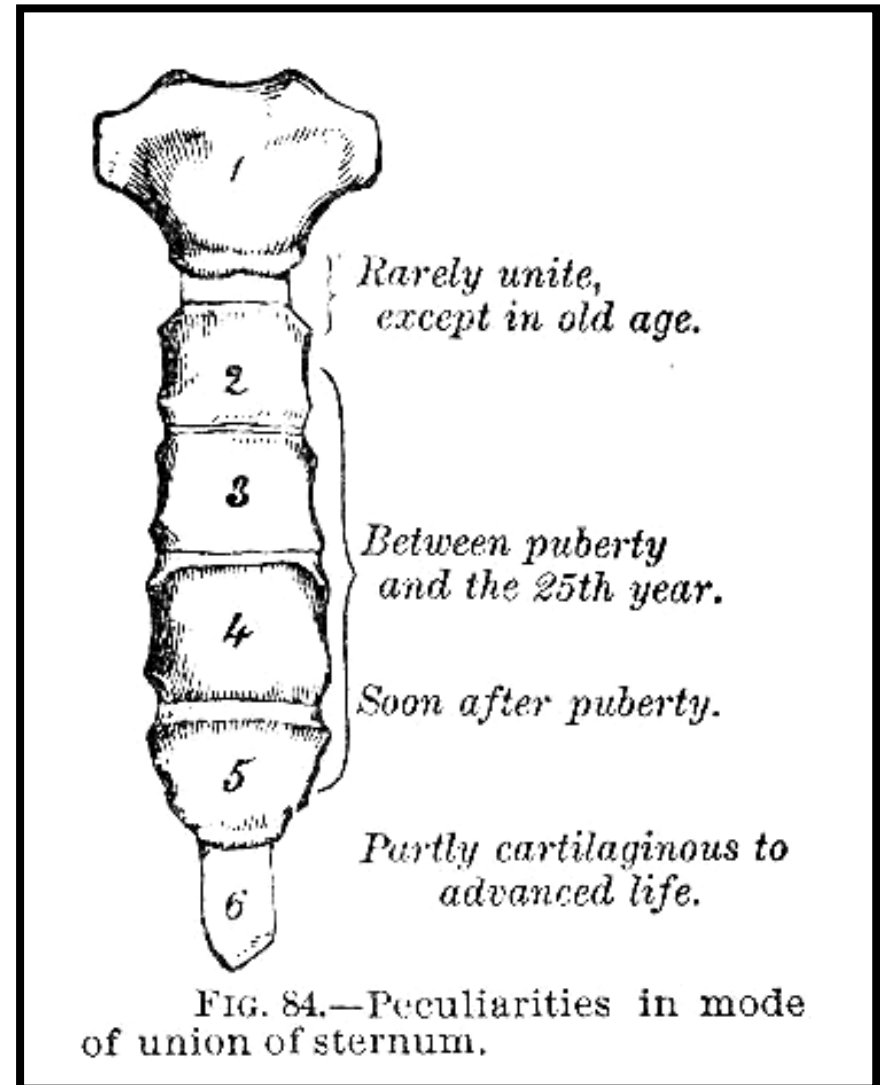


- Manubrium
 - Jugular notch
 - Clavicular notch
 - Costal notch 1, superior ½ of notch 2
- Corpus Sterni
 - Costal notches 2 ½ -7
- Xiphoid process



Growth of the Sternum

- Ossification from six segments, called **Sternebrae**
 - Manubrium
 - Xiphoid process
 - Body (4)



Identification and Siding

- Fragments may be mistaken for fragments of the pelvis or immature vertebrae
- Remember that the manubrium and sternal bodies can be present as unfused individual elements
- No siding